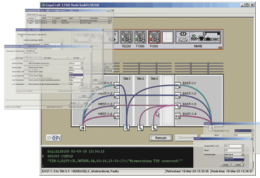


RBNi GigaCraft 1200™



Bringing visibility and control of your RBN Service Network solution to your desktop.

KEY FEATURES

- ◆ Graphical easy to use interface
- ◆ Configure systems remotely or on-site
- ◆ Monitor all alarms from central location
- ◆ Suitable for all RBN products
- ◆ Cross platform suitability
- ◆ Compatible with larger NMS systems

The RBNi GigaCraft 1200 is a stand-alone, application designed and built specifically for provisioning and maintaining RBN equipment. Use GigaCraft 1200 to:

- ◆ Configure modules
- ◆ Configure service cross-connections
- ◆ Configure path level cross-connections
- ◆ Monitor alarms
- ◆ Monitor configuration status

GigaCraft 1200 replaces the most commonly used commands with an easy-to-use graphical interface. All commands can still be entered into an integrated CLI window and all responses return to the CLI window and where appropriate, to the graphical interface.

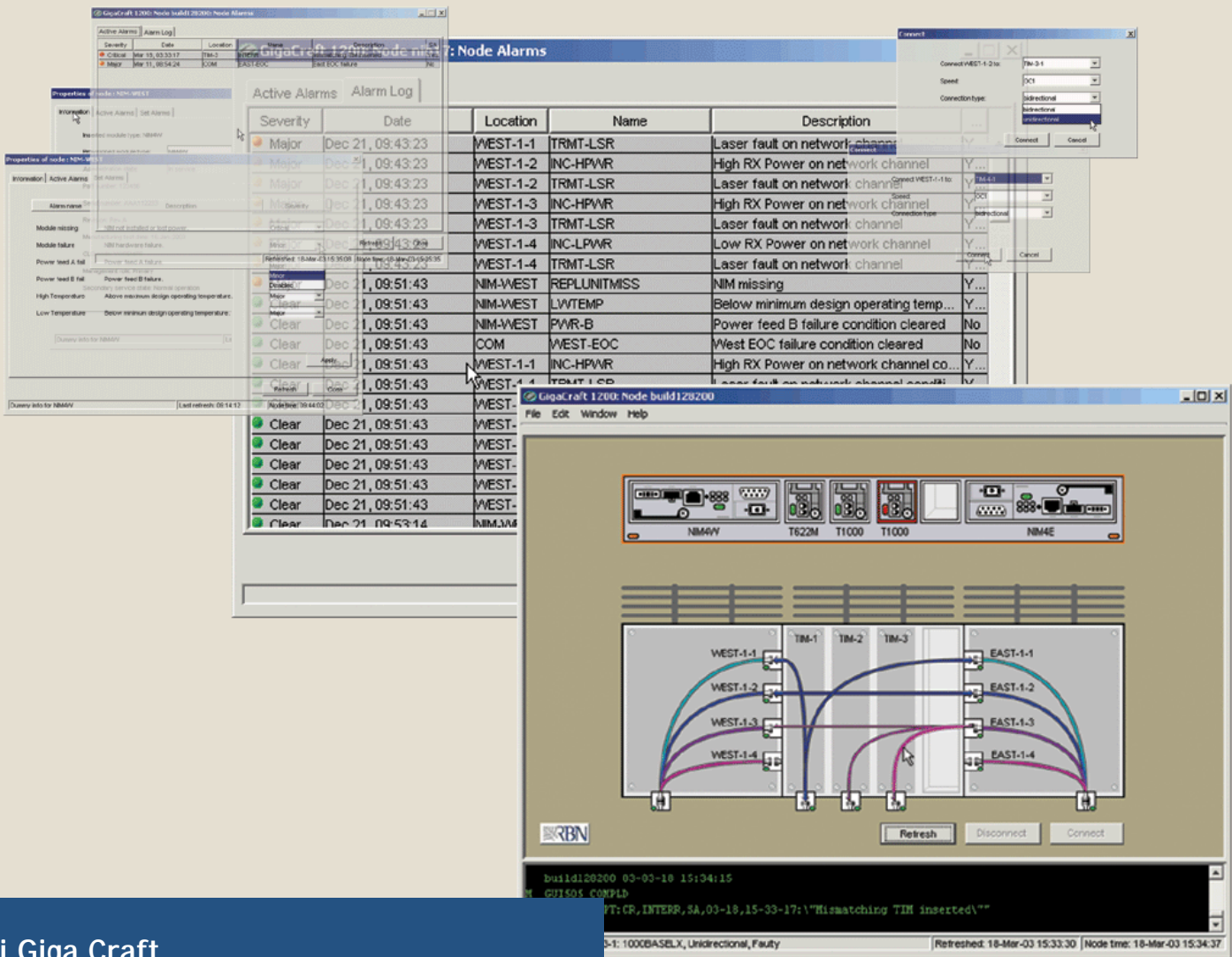
Simple and easy to use—so easy you won't need the comprehensive online manual that comes with it.

Monitoring a node is as simple as watching for the flashing lights of an alarm.

View all your nodes at once from a central office location or on site. Remote configuration and monitoring of all modules and RBN's integrated switching functionality minimizes truck rolls.

Use the RBNi GigaCraft 1200 to monitor and control all RBN equipment:

- ◆ RBNi GigaEdge 2330
- ◆ RBNi GigaEdge 8200
- ◆ RBNi GigaRegen 8100



RBNi Giga Craft

OPERATING SYSTEM

Operating system Windows 98 & 2000 or newer
UNIX (HP-UX, Free BSD)

MEMORY

Disk space 40 M
RAM 128 M

INTERFACES

Direct DB9 RS232 serial
Network 10 BASE-T ethernet

FEATURES

System Open as many windows as your PC memory allows
Auto-discovers the node at login
Graphical interface Clean, simple interface
Four click provisioning
Shows Cross-connections
Shows alarms
TL1 interface Point & click and/or use TL1 on the same window at the same time
Alarm window Current alarms
Alarm log

Please contact RBN for further product information

743-000-004/4